

# SMALLER BUT TOUGHER

CENTRE FOR CRIME  
AND JUSTICE STUDIES

THE NUMBER OF **YOUNG ADULTS** IN COURT  
FOR MORE **SERIOUS OFFENCES** HAS FALLEN  
BY **65%** SINCE 2010.



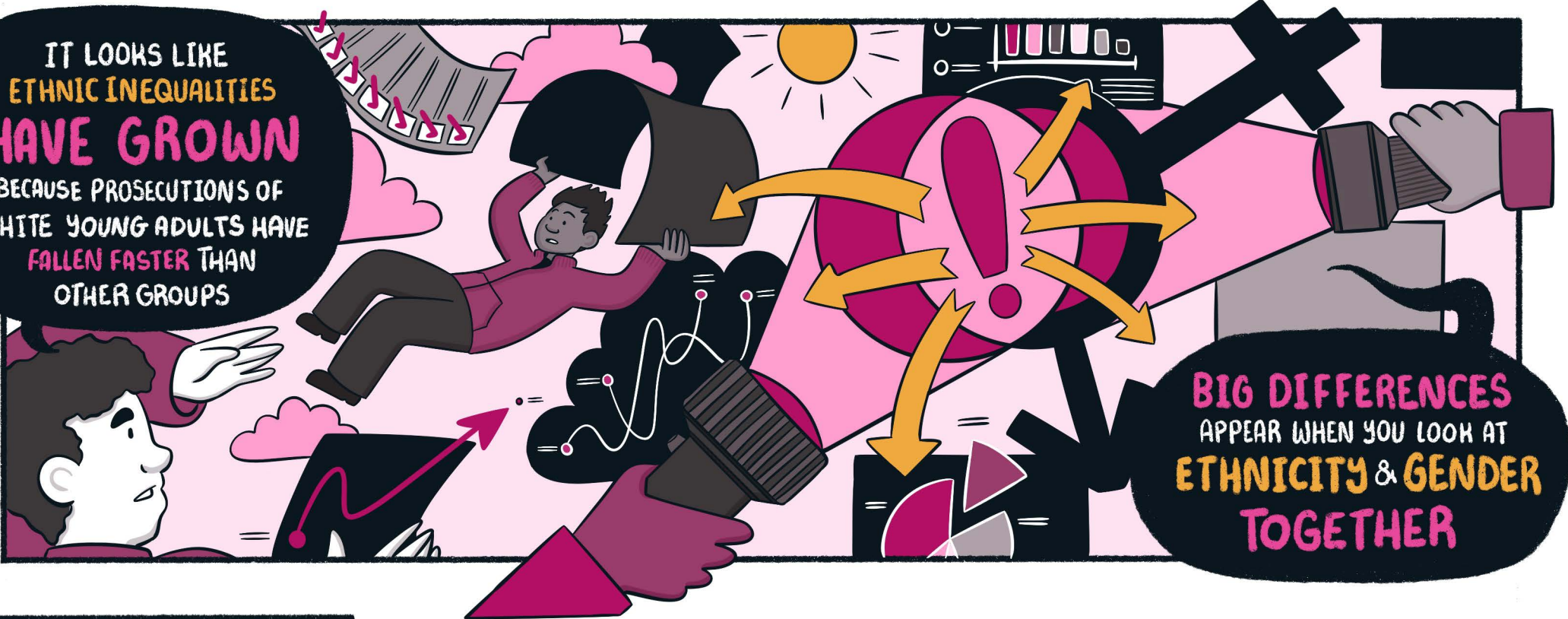
BUT THOSE WHO DO APPEAR IN COURT ARE NOW MORE LIKELY TO BE  
**HELD ON REMAND**, LESS LIKELY TO GET A COMMUNITY SENTENCE,  
AND **MORE LIKELY TO BE SENT TO PRISON** - AND FOR LONGER...

**YOUNG ADULT MEN** ARE MORE LIKELY TO BE  
HELD ON REMAND AND SENT TO PRISON...

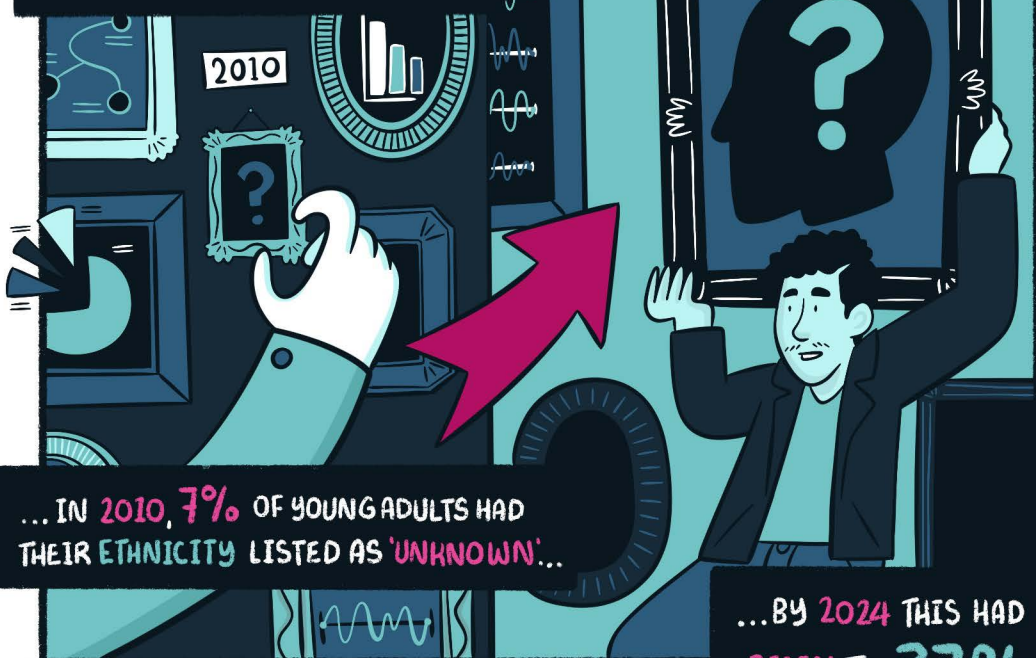


...WHILE **YOUNG ADULT WOMEN** ARE MORE LIKELY TO BE REMANDED  
FOR OFFENCES THAT **DO NOT RESULT IN A PRISON SENTENCE**

IT LOOKS LIKE  
**ETHNIC INEQUALITIES**  
**HAVE GROWN**  
BECAUSE PROSECUTIONS OF  
WHITE YOUNG ADULTS HAVE  
**FALLEN FASTER** THAN  
OTHER GROUPS



BUT THERE'S A REAL PROBLEM WITH  
THE **ACCURACY OF ETHNICITY DATA**,  
WHICH HAS BECOME **LESS AND**  
**LESS RELIABLE** OVER TIME ...



IN OTHER WORDS, THE JUSTICE SYSTEM HAS BECOME  
**SMALLER, BUT TOUGHER**, FOR YOUNG ADULTS...



Managed &  
Convened by

SUPPORTED BY:



**READ THE REPORT HERE**

<https://www.crimeandjustice.org.uk/smaller-but-tougher>

