

The prisons crisis

Richard Garside

Director

Centre for Crime and Justice Studies

www.crimeandjustice.org.uk

CENTRE FOR CRIME
AND JUSTICE STUDIES

Violence, self harm and deaths

UK Justice Policy Review

Volume 6

From the General Election
to Brexit

7 May 2015 to 23 June 2016

by Richard Garside, Matt Ford,
Helen Mills and Rebecca Roberts

Suicide, self-harm and assaults in prison between 2010 and 2016

England and Wales



Scotland



Northern Ireland



**CENTRE FOR CRIME
AND JUSTICE STUDIES**

Imprisonment in the UK

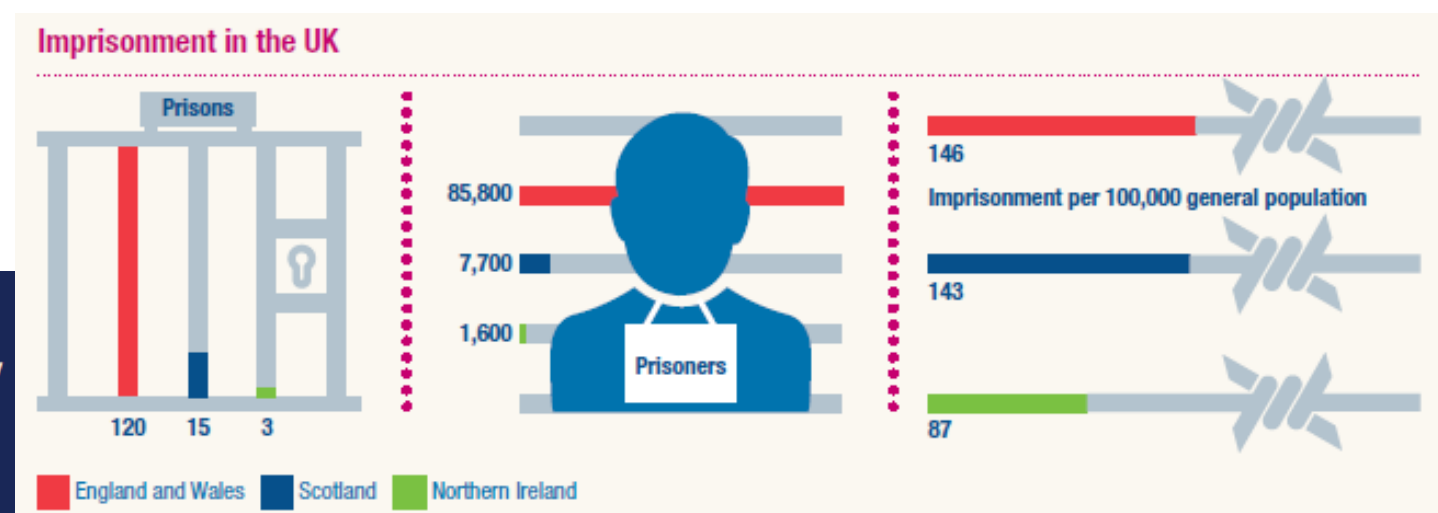
UK Justice Policy Review

Volume 6

From the General Election
to Brexit

7 May 2015 to 23 June 2016

by Richard Garside, Matt Ford,
Helen Mills and Rebecca Roberts



**CENTRE FOR CRIME
AND JUSTICE STUDIES**

Imprisonment, England and Wales



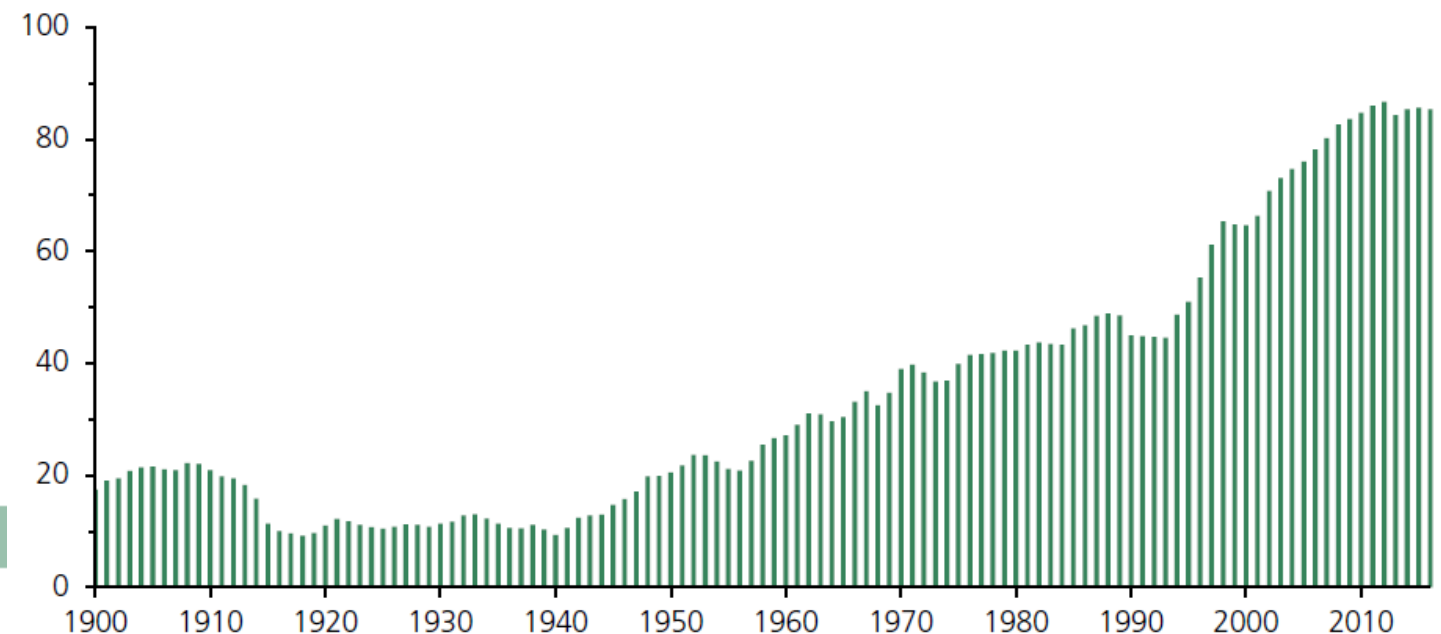
HOUSE OF COMMONS
LIBRARY

BRIEFING PAPER

Number SN/SG/04334, 20 April 2017

UK Prison Population
Statistics

Prison population in England & Wales, 1900-2016 (000s)



CENTRE FOR CRIME
AND JUSTICE STUDIES

Imprisonment, Scotland



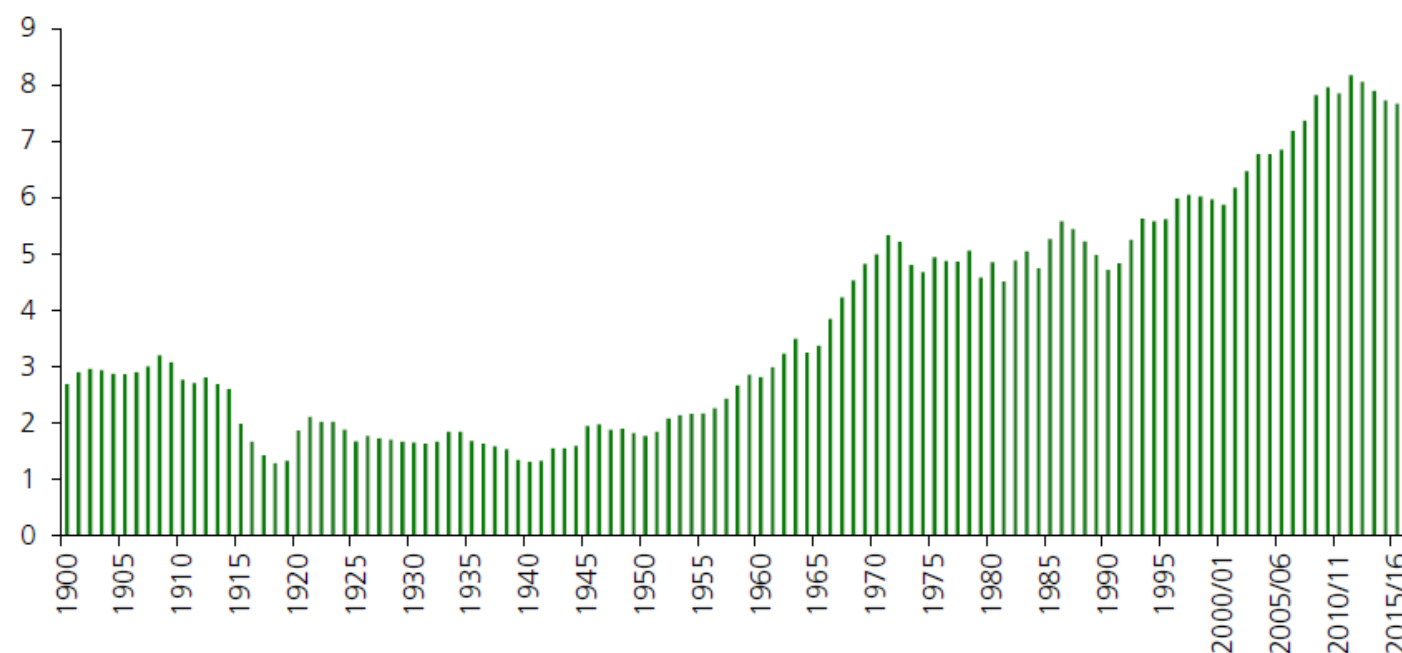
HOUSE OF COMMONS
LIBRARY

BRIEFING PAPER

Number SN/SG/04334, 20 April 2017

UK Prison Population
Statistics

Average daily prison population Scotland, 1900-2015/16 (000s)³⁴



CENTRE FOR CRIME
AND JUSTICE STUDIES

Imprisonment, Northern Ireland



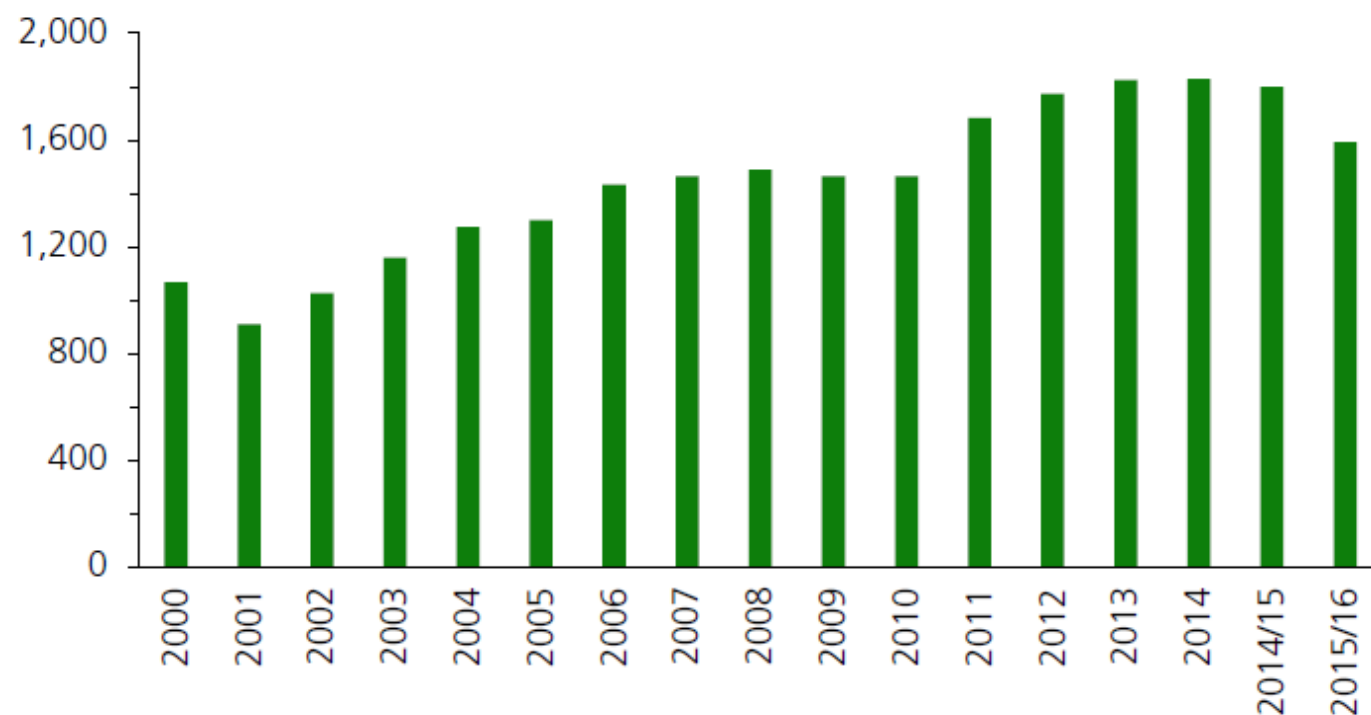
HOUSE OF COMMONS
LIBRARY

BRIEFING PAPER

Number SN/SG/04334, 20 April 2017

UK Prison Population
Statistics

Average daily prison population, Northern Ireland, 2000-2015/16



CENTRE FOR CRIME
AND JUSTICE STUDIES

Imprisonment rates, international



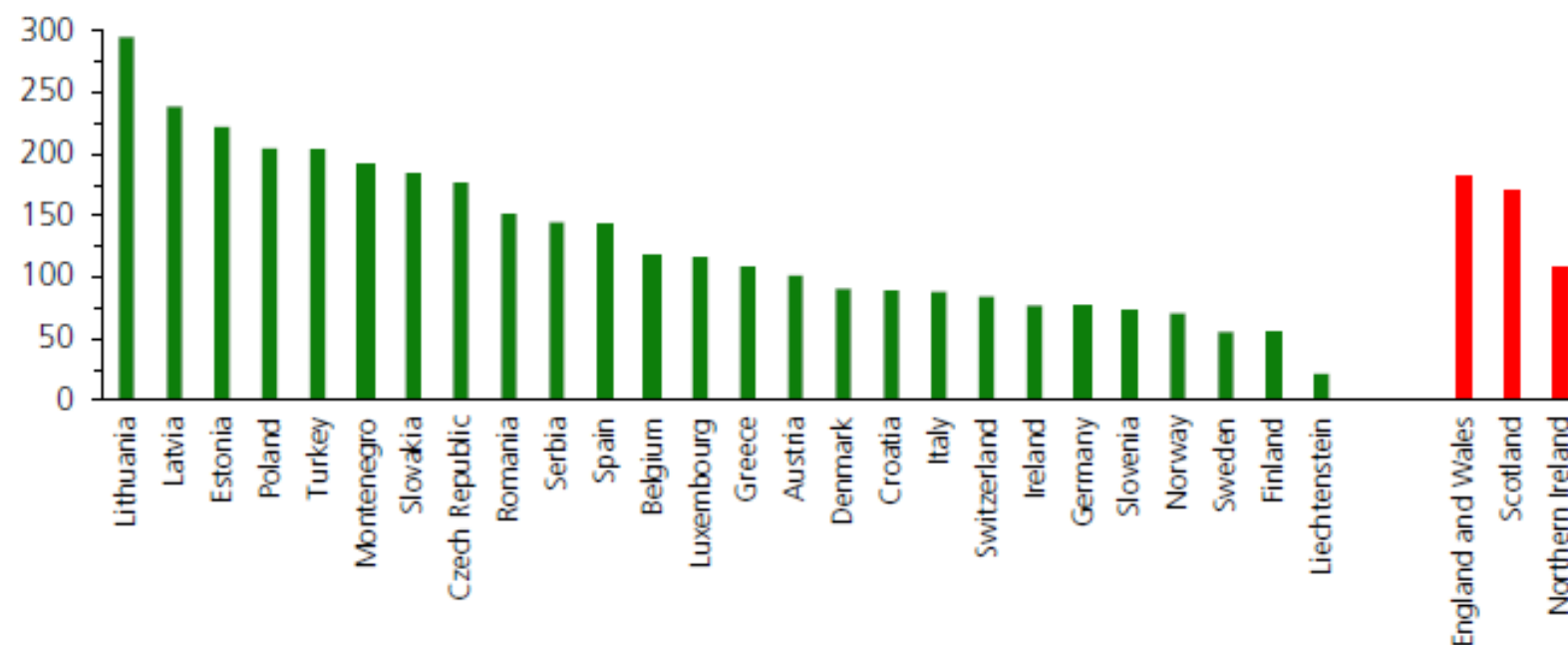
HOUSE OF COMMONS
LIBRARY

BRIEFING PAPER

Number SN/SG/04334, 20 April 2017

UK Prison Population
Statistics

Prison population per 100,000 population, selected European countries



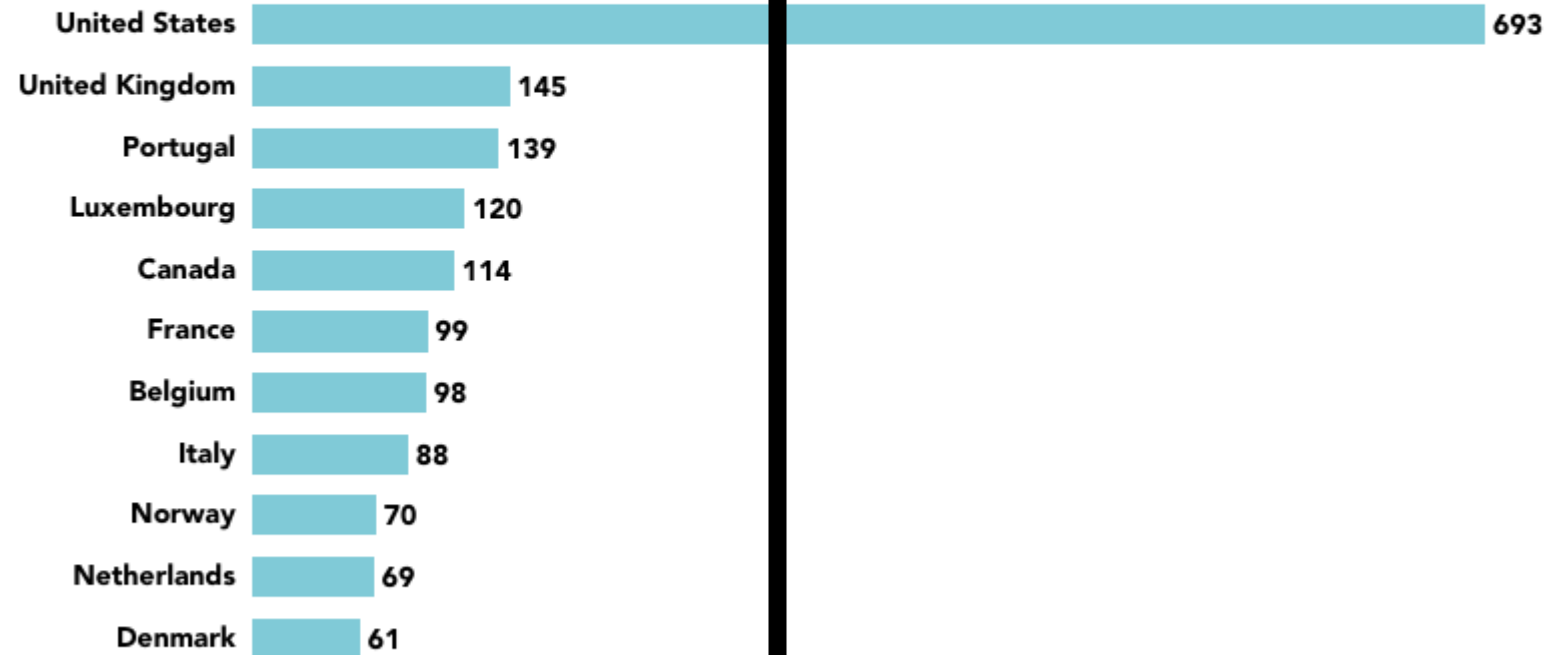
CENTRE FOR CRIME
AND JUSTICE STUDIES

US way out in the lead

INCARCERATION RATES

AMONG FOUNDING NATO MEMBERS

INCARCERATION RATE
(per 100,000 population)



Source: <http://www.prisonpolicy.org/global/2016.html>

CENTRE FOR CRIME
AND JUSTICE STUDIES

Characteristics of adult prisoners

Characteristic	Prison population	General population
Taken into care as a child	24% (31% for women, 24% for men)	2%
Experienced abuse as a child	29% (53% for women, 27% for men)	20%
Observed violence in the home as a child	41% (50% for women, 40% for men)	14%
Regularly truant from school	59%	5.2% (England) and 4.8% (Wales)
Expelled or permanently excluded from school	42% (32% for women, 43% for men)	In 2005 >1% of school pupils were permanently excluded (England)
No qualifications	47%	15% of working age population
Unemployed in the four weeks before custody	68% (81% for women, 67% for men)	7.7% of the economically active population are unemployed
Never had a job	13%	3.9%
Homeless before entering custody	15%	4% have been homeless or in temporary accommodation
Have children under the age of 18	54%	Approximately 27% of the over 18 population*
Are young fathers (aged 18–20)	19%	4%
Have symptoms indicative of psychosis	16% (25% for women, 15% for men)	4%
Identified as suffering from both anxiety and depression	25% (49% for women, 23% for men)	15%
Have attempted suicide at some point	46% for women, 21% for men	6%
Have ever used Class A drugs	64%	13%
Drank alcohol every day in the four weeks before custody	22%	16% of men and 10% of women reported drinking on a daily basis

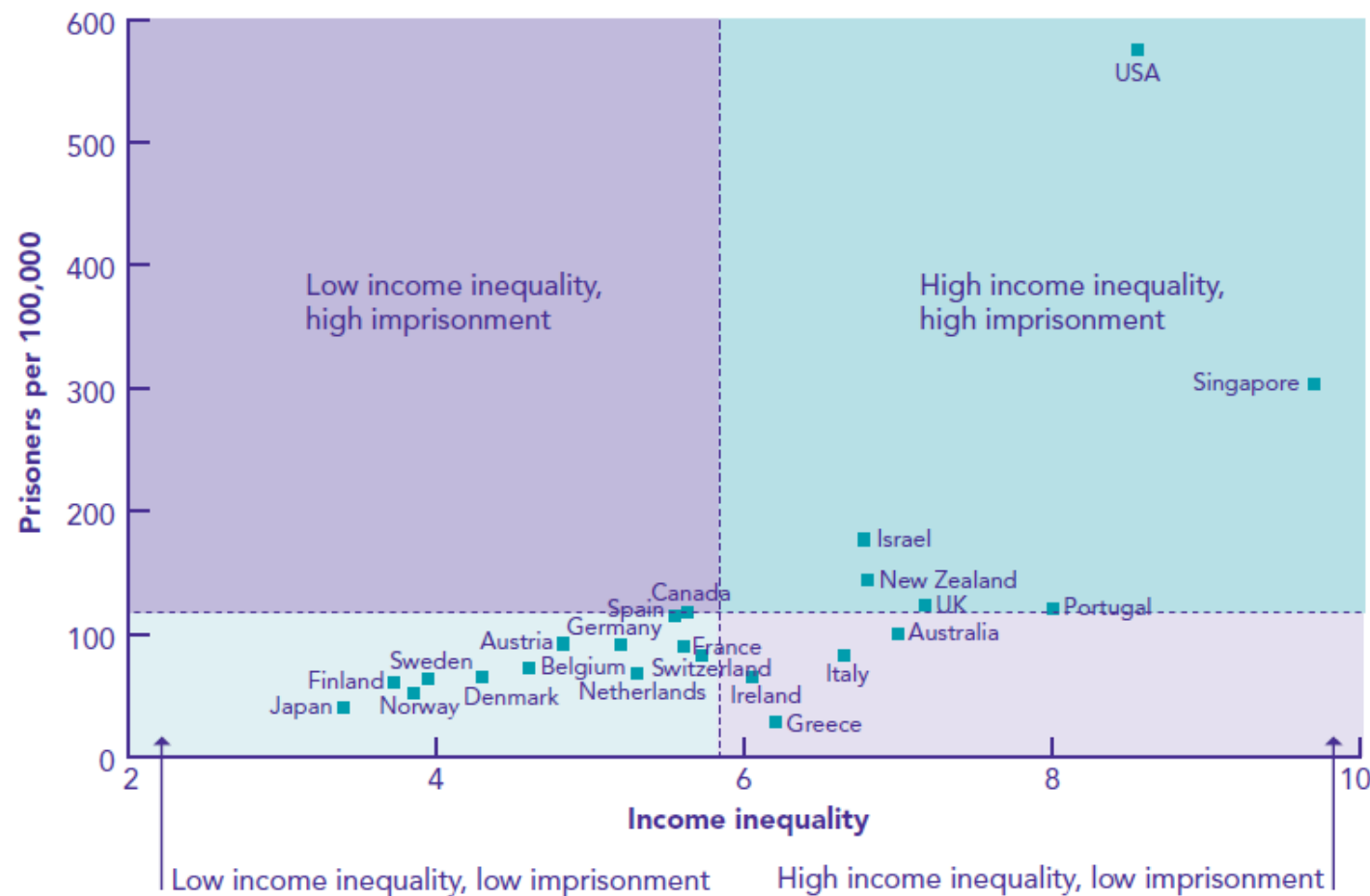


Bromley Briefings Prison Factfile
Autumn 2017

**CENTRE FOR CRIME
AND JUSTICE STUDIES**

Imprisonment and income inequality

Figure 2: Income inequality and imprisonment

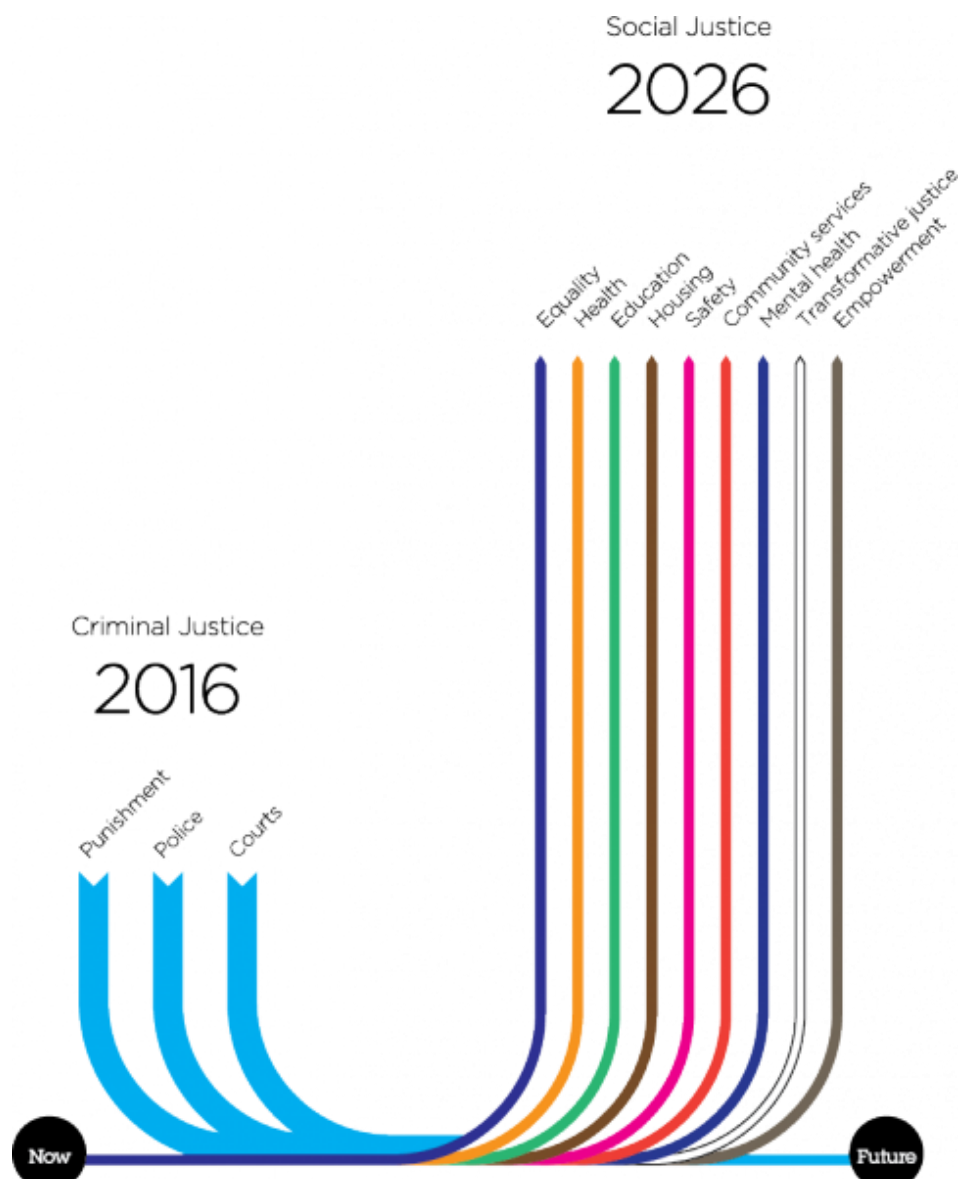


CENTRE FOR CRIME
AND JUSTICE STUDIES

Reducing the
numbers in custody:
beyond criminal

CENTRE FOR CRIME
AND JUSTICE STUDIES

Justice Matters



CENTRE FOR CRIME
AND JUSTICE STUDIES